

Autodesk® NavisWorks® Surveyor

(by Arkitectonix)

“Generating reports straight from your Autodesk NavisWorks model”

Autodesk® NavisWorks® Surveyor

- Reports to be created from any NavisWorks selection set or search set
- Integrated with NavisWorks, no complex linking is necessary
- Reporting capability to Microsoft Excel and able to save multiple report configurations
- Easy to extract and export detailed component information directly from your 3D NavisWorks model

Surveyor for NavisWorks

“Surveyor for NavisWorks enables users to generate reports in a quick, easy but powerful way straight from the 3D NavisWorks model”

Surveyor for NavisWorks is a very powerful Add-On to generate several types of reports during design, construction and maintenance of your project. Surveyor for NavisWorks is an excellent tool that allows Project Managers, Design Engineers, Construction Engineers and On-site Managers to obtain detailed project component information directly from the 3D NavisWorks model without using the original CAD modeling system.

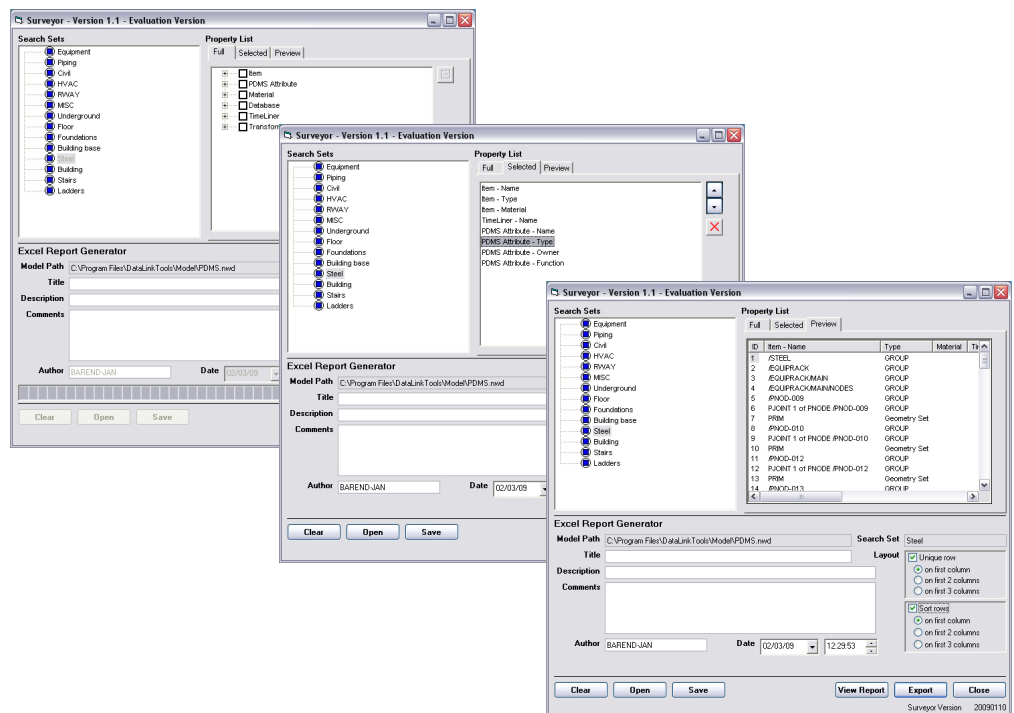
Autodesk NavisWorks, the World leading Design Review solution, becomes even more powerful by adding the Surveyor plug-in. Surveyor is capable to extract detailed project component data by using default Autodesk NavisWorks functionality like “Selection Sets” and “Search Sets”, it allows you to setup a report with the extracted properties found in these sets. The setup of such a report then can be saved to the universal XML format for future use. This way Surveyor also enables users to make comparison lists from certain stages of the project.

Surveyor is capable to generate a large number of different reports, which as mentioned can be stored in XML format, but also allows the user to export the detailed project component information to Microsoft Excel. Microsoft Excel is still considered as the most common tool to check, modify and add information to lists used in a wide range of industries. Surveyor offers also the possibility to head up the Microsoft Excel report including Model Path, Search Set, Author, Date/Time and additional fields like Title, Description and comment fields to amplify the report.

Surveyor is a powerful tool for generating reports by everyone who is committed to the project regardless of the discipline they work in; reports can be generated for Mechanical, Electrical, On-site Management, Project Management and any other engineering discipline. Surveyor creates reports regardless if the user has knowledge of the original CAD modeling tool. Surveyor for Autodesk NavisWorks in combination with Microsoft Excel makes it the easiest way to manage your detailed project component information like you have never seen before.

Rick Hall of Arkitectonix says...

“ We see Surveyor as a tool to generate reports by all people working in a project and involved in several divisions: piping, hvac, electrical,: PE (Project Engineers), LE (Lead Engineers), SE (Site Engineers) and SM (site managers). These people are not always equally skilled in operating the CAD modelling systems for reporting, and using NavisWorks and Excel represents the best and easiest solution to manage data. Other value added tools are currently under development”



TEAM TOGETHER....
CAD TEAM
....ACHIEVE MORE

CADTEAM
Vendelier 61
3905 PD Veenendaal

Tel. +31 (0)318 - 616924
Fax. +31 (0)318 - 616491

www.cadteam.nl
info@cadteam.nl

arkitectonix

Hill Head, Bradwell Hope Valley S33 9HY, UK